

**VENTURA COUNTY
PUBLIC HEALTH**

**HIV/AIDS SURVEILLANCE
FINAL REPORT**

JANUARY 2006 - DECEMBER 2006

PREPARED BY
VENTURA COUNTY PUBLIC HEALTH
THE HIV/AIDS CENTER
OFFICE OF HIV/AIDS SURVEILLANCE

VENTURA COUNTY PUBLIC HEALTH

This final HIV/AIDS Surveillance Report will discuss cases of HIV and AIDS reported to the Ventura County Public Health Department from January 2006 to December 2006. Ventura County Public Health has been conducting active AIDS surveillance since 1987. **HIV reporting began July 1, 2002.**

CUMULATIVE STATISTICS							
	VENTURA COUNTY HIV NON-NAME	VENTURA COUNTY HIV NAME	VENTURA COUNTY AIDS	NON-RESIDENT CASES (HIV/AIDS)	CALIF. AIDS (11/06)	CALIF. HIV (11/06) NAME ONLY	USA AIDS (12/04)
ADULT CASES	183	153	1024		142,592	5,455	934,862
ADULT DEATHS	6	2	565		82,339	160	523,598
PED CASES	6	1	3		656	72	9,443
PED DEATHS	0	0	2		395	0	5,515
TOTALS	189	154	1027	391	143,248	5,527	944,305
DEATHS	6	2	567	144	82,734	160	529,113

- Cumulative data, numbers may change due to delays in reporting.
- Duplications with other counties and states periodically affect our numbers.
- Non-resident (Out of County) cases are diagnosed cases of HIV/AIDS reported by another county or state but who are now residing and receiving care in Ventura County.
- There were **twenty five** new Non-Resident cases in 2006 compared to **twenty one** reported in 2005.

HIV REPORTING

HIV reporting in California began July 1, 2002 by using a non-name code based system. April 17, 2006 brought about another change. The State of California implemented emergency regulations to begin reporting HIV by name as requested by the CDC (Center for Disease Control). We are only allowed to report patients who have had positive HIV tests after April 17th, 2006. These tests include all HIV tests indicative of HIV infection, including a viral load test. The State and the CDC currently only recognize cases which are identified by name, all other cases are not included and in fact have been deleted from the State's data base. We are currently and will be for the next 2-3 years attempting to re-ascertain previously identified cases of HIV infection. This is critical for a number of reasons:

- The financial resources provided to Ventura County for HIV/AIDS services is dependent upon the number of Living cases of HIV/AIDS reported.
- We need accurate data to determine strategies for education and prevention programs.
- At this point in time, due to the changes in the law we are obviously under reporting the number of HIV cases living and potentially receiving services in Ventura County. The only data which can be reported at this time are HIV cases which are new or have been re-ascertained by name.

VENTURA COUNTY HIV CASES		
HIV	2005 (non-name code)	2006 (name : new & re-ascertained)
#CASES REPORTED	29	153
#DEATHS	0	2
MALES	22 (76%)	108 (70%)
FEMALES	7 (24%)	45 (30%)
RACE		
WHITE	16 (55%)	72 (47%)
HISPANIC	9 (31%)	72 (47%)
BLACK	3 (10%)	6 (4%)
AGE		
<19 YEARS	1 (3%)	5 (4%)
20-29	7 (24%)	40 (26%)
30-39	9 (31%)	56 (36%)
40-49	8 (28%)	37(24%)
>49	4 (14%)	16 (10%)
EXPOSURE CATEGORY		
MEN SEX WITH MEN	20 (69%)	79 (52%)
IDU	0	16 (10%)
HETEROSEXUAL	6 (21%)	40 (26%)
NO RISK ID(under investigation)	3 (10%)	14 (9%)
FACILITY OF DIAGNOSIS		
VCMC	33%	53%
PRIMARY MD	61%	25%
LA FACILITY	3%	1%
VC PRIVATE HOSPITAL	3%	1%
OTHER	0	20%

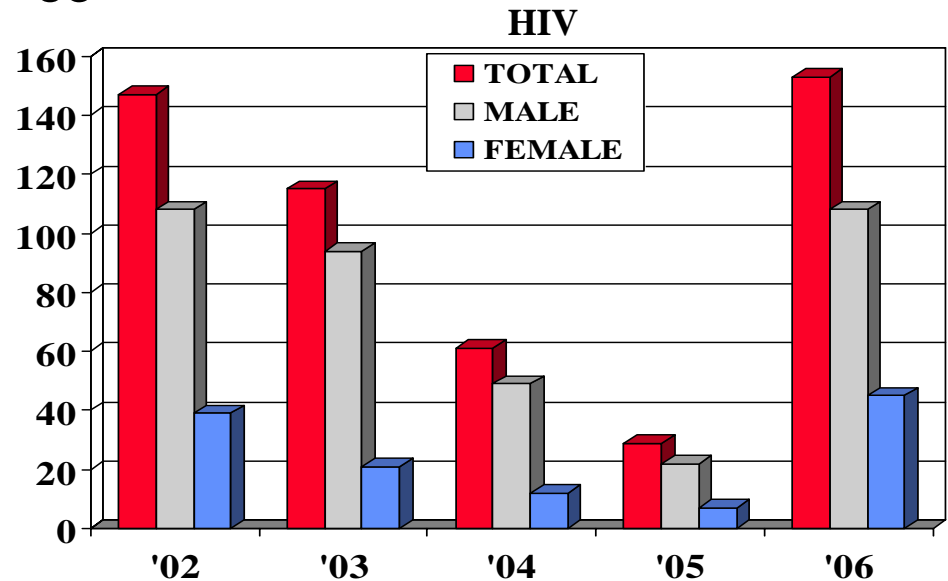
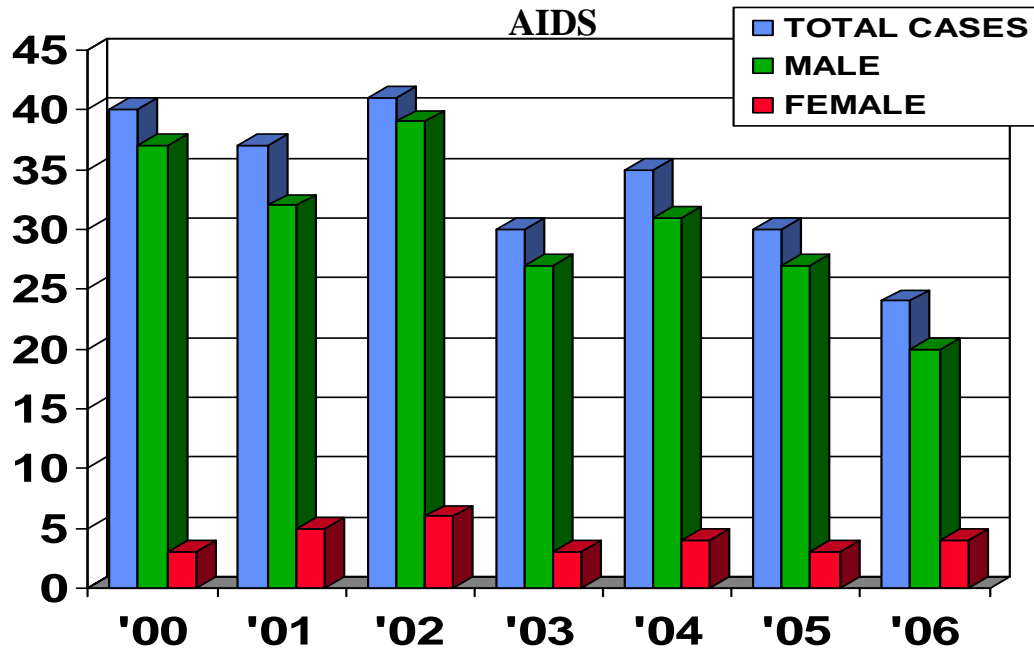
VENTURA COUNTY AIDS CASES		
AIDS	2005	2006
#CASES REPORTED	30	24
#DEATHS	12	3
MALES	27 (90%)	20 (83%)
FEMALES	3 (10%)	4 (17%)
RACE		
WHITE	8 (27%)	13 (54%)
HISPANIC	18 (60%)	9 (38%)
BLACK	2 (7%)	1 (4%)
AGE AT DIAGNOSIS		
<19 YEARS	3 (3%)	0
20-29	4 (13%)	2 (8%)
30-39	11 (37%)	5 (21%)
40-49	7 (23%)	15 (63%)
>49	7 (23%)	2 (8%)
EXPOSURE CATEGORY		
MEN SEX WITH MEN	20(67%)	14 (58%)
IDU	0	4 (17%)
HETEROSEXUAL	3 (10%)	2 (8%)
NO RISK ID (under investigation)	7(23%)	4 (17%)
AIDS DEFINING ILLNESS		
PCP	3(10%)	2 (8%)
KS	1 (3%)	1 (4%)
CD4	14 (47%)	16 (67%)
OTHER OI'S (NO PCP)	12 (40%)	5 (21%)
FACILITY OF DIAGNOSIS		
VCMC	38%	42%
PRIMARY MD	33%	25%
LA FACILITY	6%	5%
VC PRIVATE HOSPITAL	17%	21%
OTHER	6%	7%

- **Thirteen out of twenty four (54%)** patients diagnosed with AIDS in the year 2006 were diagnosed with HIV and AIDS at the same time, compared to being diagnosed HIV+ and years later AIDS.

The demographics of these individuals are as follows:

- Average age was 39 years (range 21 – 69 years)
- 6 White, 5 Hispanic, 1 each Philippino/African American
- 10 MSM, 2 bi-sexual, 1 female infected by + male partner (hetero)

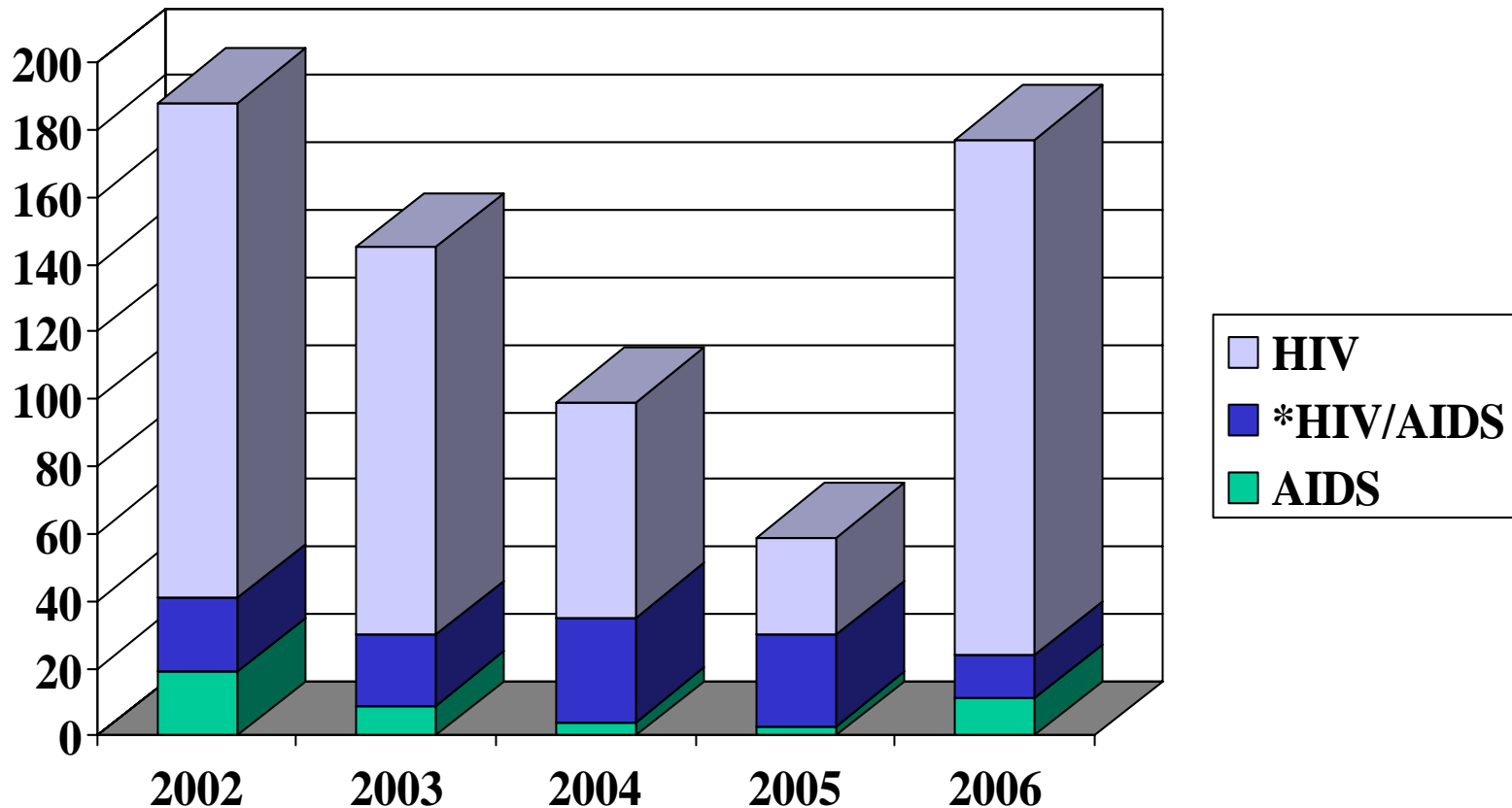
VENTURA COUNTY PUBLIC HEALTH HIV/AIDS STATISTICS



***THE DRAMATIC DECLINE IN THE NUMBER OF HIV CASES BEING REPORTED IS DUE TO THE COMPLETION OR NEAR COMPLETION OF ENTERING RETRO-ACTIVE CASES.**

*** THE INCREASE IN 2006 IS DUE TO THE NEW REPORTING LAWS ENACTED APRIL 17, 2006. MOST OF THESE ARE RE-ASCERTAINED CASES.**

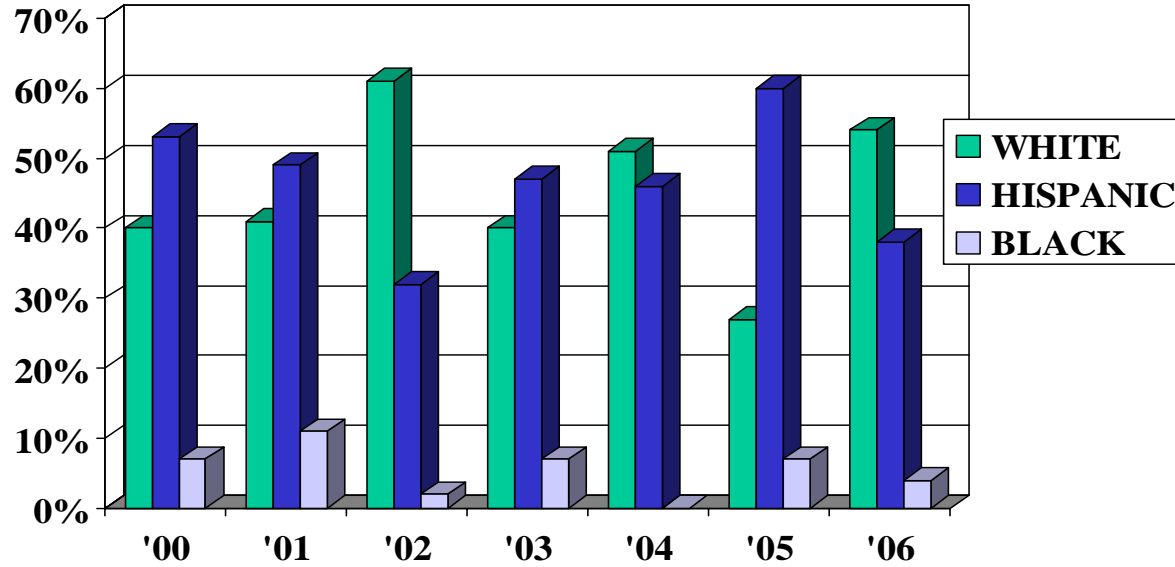
VENTURA COUNTY PUBLIC HEALTH HIV AND AIDS CASES ENTERED PER YEAR



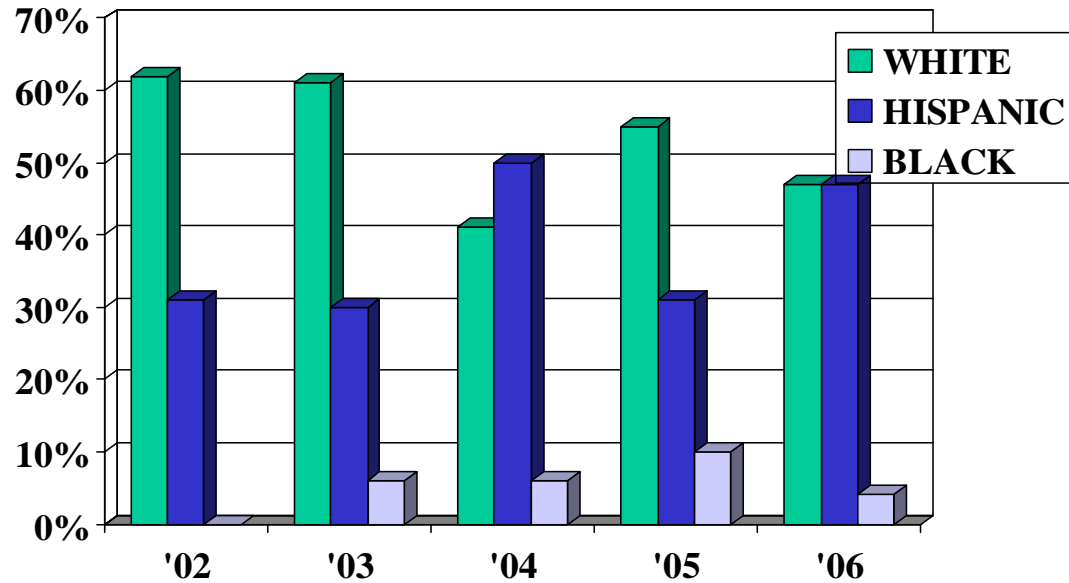
* These are cases which presented as HIV positive and an AIDS diagnosis at the same time.
(They are entered as AIDS cases.)

VENTURA COUNTY PUBLIC HEALTH HIV/AIDS CASES BY RACE

AIDS

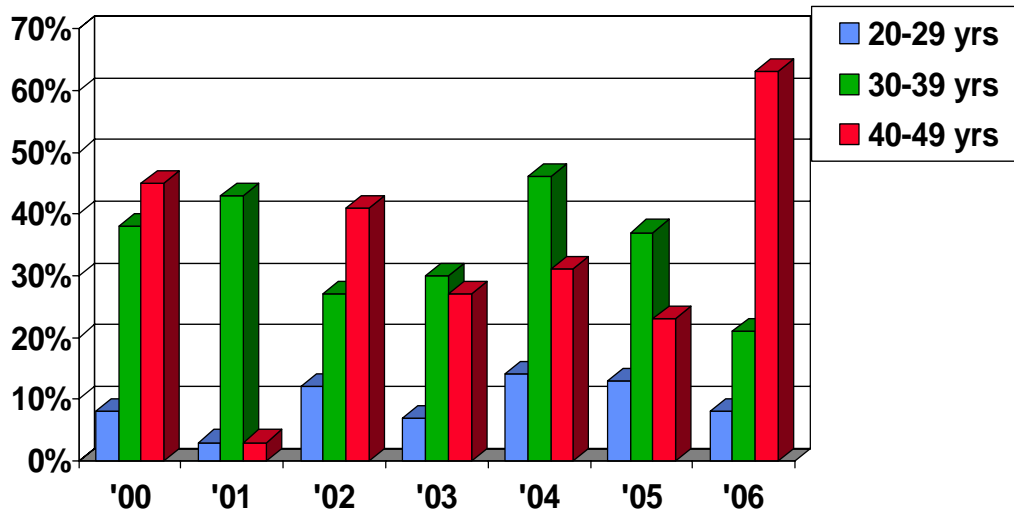


HIV

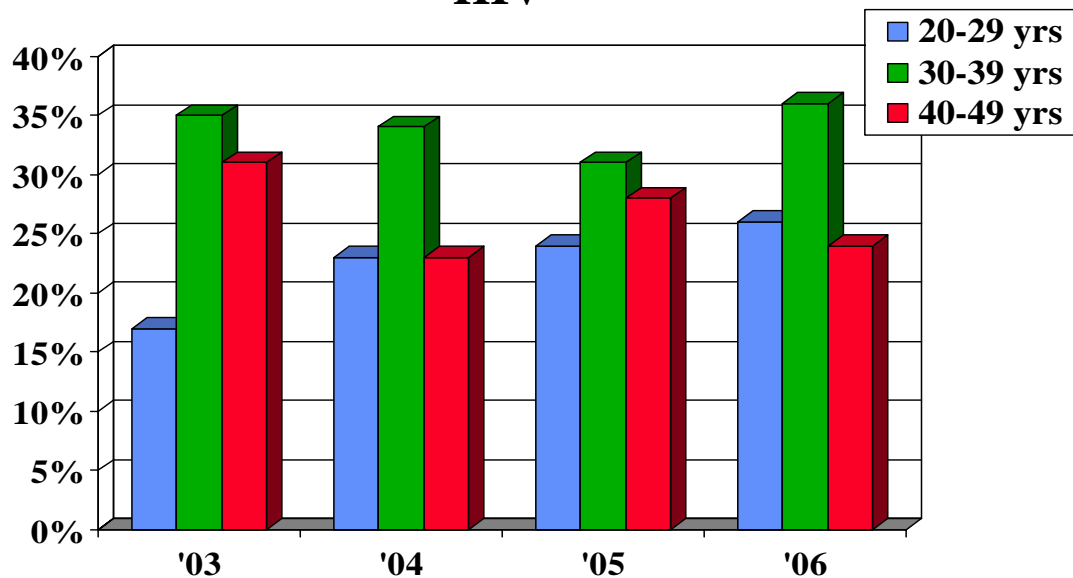


VENTURA COUNTY PUBLIC HEALTH AGE AT DIAGNOSIS

AIDS

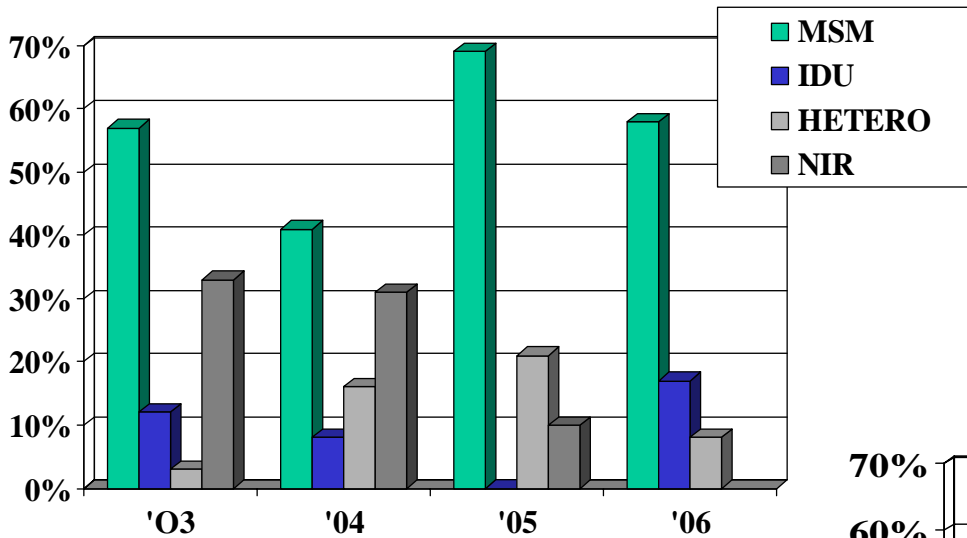


HIV

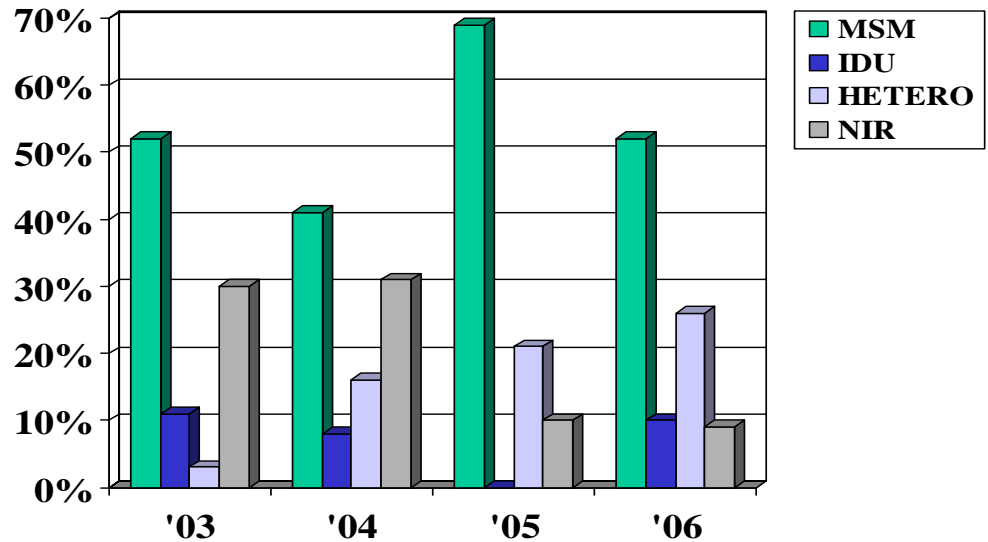


VENTURA COUNTY PUBLIC HEALTH HIV/AIDS MODE OF TRANSMISSION

AIDS



HIV



VENTURA COUNTY PUBLIC HEALTH FACILITY OF DIAGNOSIS AIDS CASES

