

**VENTURA COUNTY  
PUBLIC HEALTH**

**HIV/AIDS SURVEILLANCE  
FINAL REPORT**

**JANUARY 2007 - DECEMBER 2007**

PREPARED BY  
VENTURA COUNTY PUBLIC HEALTH  
THE HIV/AIDS CENTER  
OFFICE OF HIV/AIDS SURVEILLANCE

# VENTURA COUNTY PUBLIC HEALTH

This final HIV/AIDS Surveillance Report will discuss cases of HIV and AIDS reported to the Ventura County Public Health Department from January 2007 to December 2007. Ventura County Public Health has been conducting active AIDS surveillance since 1987. **HIV reporting began July 1, 2002.**

	VENTURA COUNTY  HIV (NEW & RE-ASCERTAINED CASES ONLY)	VENTURA COUNTY  AIDS	NON-RESIDENT CASES (HIV/AIDS)	CALIF. AIDS (12/07)	CALIF. HIV (12/07)  NAME ONLY	USA AIDS (12/05)
ADULT CASES	357	1052		Data is currently only available by special request.  <a href="http://www.dhs.ca.gov/AIDS">www.dhs.ca.gov/AIDS</a>		
ADULT DEATHS	10	578				
PED CASES	7	3				
PED DEATHS	0	2				
TOTALS	364	1055	431	147,821	24,477	984,155
DEATHS	10	580	145	84,532	717	525,442

- Cumulative data, numbers may change due to delays in reporting.
- Duplications with other counties and states periodically affect our numbers.
- Non-resident ( Out of County) cases are diagnosed cases of HIV/AIDS reported by another county or state but who are now residing and receiving care in Ventura County.
- There were **thirty eight** new Non-Resident cases in 2007 compared to **twenty five** reported in 2006.

## HIV REPORTING

HIV reporting in California began July 1, 2002 by using a non-name code based system. April 17, 2006 brought about another change. The State of California implemented emergency regulations to begin reporting HIV by name as requested by the CDC ( Center for Disease Control). We are only allowed to report patients who have had positive HIV tests after April 17<sup>th</sup>, 2006. These tests include all HIV tests indicative of HIV infection, including a viral load test. The State and the CDC currently only recognize cases which are identified by name, all other cases are not included and in fact have been deleted from the State's data base. We are currently and will be for the next 2-3 years attempting to re-ascertain previously identified cases of HIV infection. This is critical for a number of reasons:

- The financial resources provided to Ventura County for HIV/AIDS services is dependent upon the number of Living cases of HIV/AIDS reported.
- We need accurate data to determine strategies for education and prevention programs.
- At this point in time, due to the changes in the law we are obviously under reporting the number of HIV cases living and potentially receiving services in Ventura County. The only data which can be reported at this time are HIV cases which are new or have been re-ascertained by name.

<b>VENTURA COUNTY HIV CASES</b>		
<b>HIV</b>	<b>2007 (name : new &amp; re-ascertained) )</b>	<b>2006 (name : new &amp; re-ascertained) )</b>
#CASES REPORTED	40	153
#DEATHS	0	2
MALES	34 ( 85%)	108 (70%)
FEMALES	6 (15%)	45 (30%)
<b>RACE</b>		
WHITE	22 (55%)	72 (47%)
HISPANIC	15 (38%)	72 (47%)
BLACK	0	6 (4%)
<b>AGE</b>		
<19 YEARS	1 (3%)	5 (4%)
20-29	9 (23%)	40 (26%)
30-39	10 (25%)	56 (36%)
40-49	15 (38%)	37(24%)
>49	5 (15%)	16 (10%)
<b>EXPOSURE CATEGORY</b>		
MEN SEX WITH MEN	28 (70%)	79 (52%)
IDU	2 (5%)	16 (10%)
HETEROSEXUAL	5(13%)	40 (26%)
NO RISK ID(under investigation)	4 (10%)	14 (9%)
<b>FACILITY OF DIAGNOSIS</b>		
VCMC	20%	53%
PRIMARY MD	30%	25%
LA FACILITY	35%	1%
VC PRIVATE HOSPITAL	3%	1%
OTHER	12%	20%

**Summary:**

- Primary age at diagnosis 40-49 yrs of age.
- MSM ( men having sex with men), followed by heterosexual contact.
- 55% white, 38% Hispanic
- More diverse entry into the reporting system. As more cases have been re-ascertained, newer cases are being reporting from their primary care physicians, however, most HIV/AIDS care is then referred to the Ventura County Immunology Clinic.

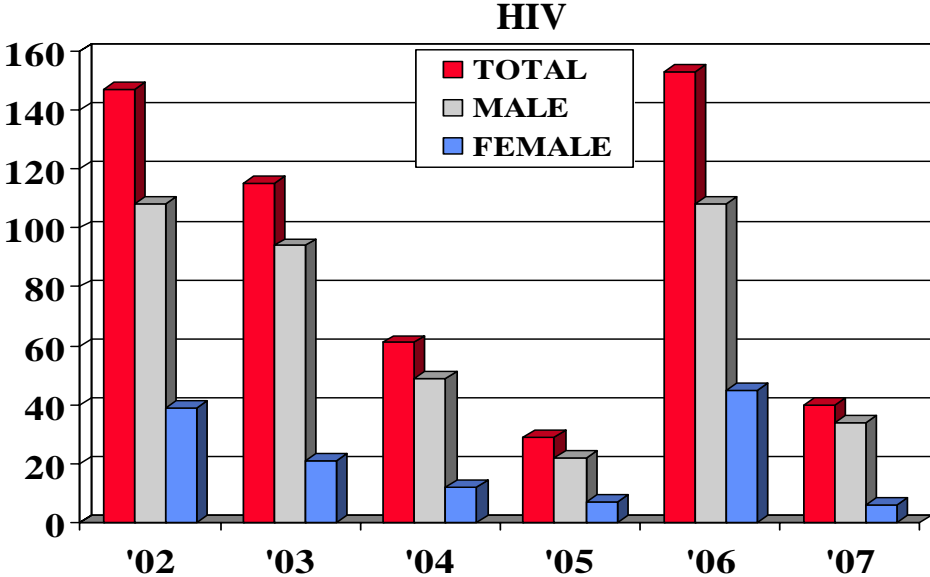
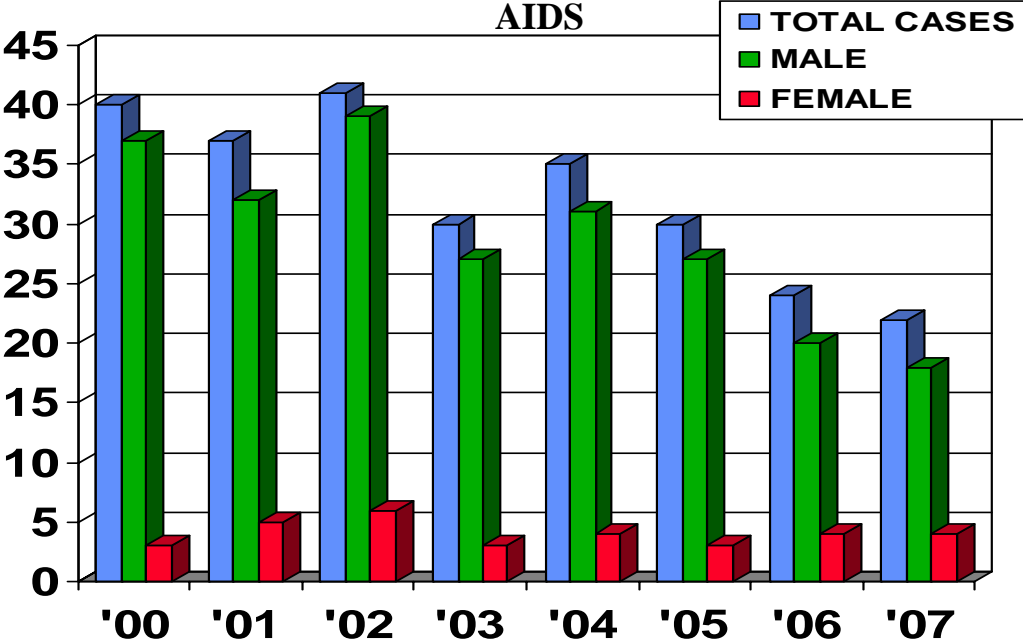
VENTURA COUNTY AIDS CASES		
AIDS	2007	2006
#CASES REPORTED	22	24
#DEATHS	9	3
MALES	18(82%)	20 (83%)
FEMALES	4 (18%)	4 (17%)
RACE		
WHITE	13 (59%)	13 (54%)
HISPANIC	8 (36%)	9 (38%)
BLACK	0	1 (4%)
AGE AT DIAGNOSIS		
<19 YEARS	0	0
20-29	3 (14%)	2 (8%)
30-39	4 (18%)	5 (21%)
40-49	10 (45%)	15 (63%)
>49	5 (23%)	2 (8%)
EXPOSURE CATEGORY		
MEN SEX WITH MEN	12(55%)	14 (58%)
IDU	2 (9%)	4 (17%)
HETEROSEXUAL	3 (14%)	2 (8%)
NO RISK ID (under investigation)	3(14%)	4 (17%)
AIDS DEFINING ILLNESS		
PCP	1(5%)	2 (8%)
KS	0	1 (4%)
CD4	17 (77%)	16 (67%)
OTHER OI'S (NO PCP)	4 (18%)	5 (21%)
FACILITY OF DIAGNOSIS		
VCMC	41%	42%
PRIMARY MD	18%	25%
LA FACILITY	28%	5%
VC PRIVATE HOSPITAL	4%	21%
OTHER	4%	7%

- **Fifteen out of twenty two (68%)** patients diagnosed with AIDS in the year 2007 were diagnosed with HIV and AIDS at the same time, compared to being diagnosed HIV+ and years later AIDS.

The demographics of these individuals are as follows:

- Average age was 42 years ( range 24 – 61 years)
- 13 White, 8 Hispanic, 1 Pilipino
- 10 MSM, 2 IDU, 3 HETERO
- Ventura 5, Oxnard 5, Simi Valley 4, Moorpark 1

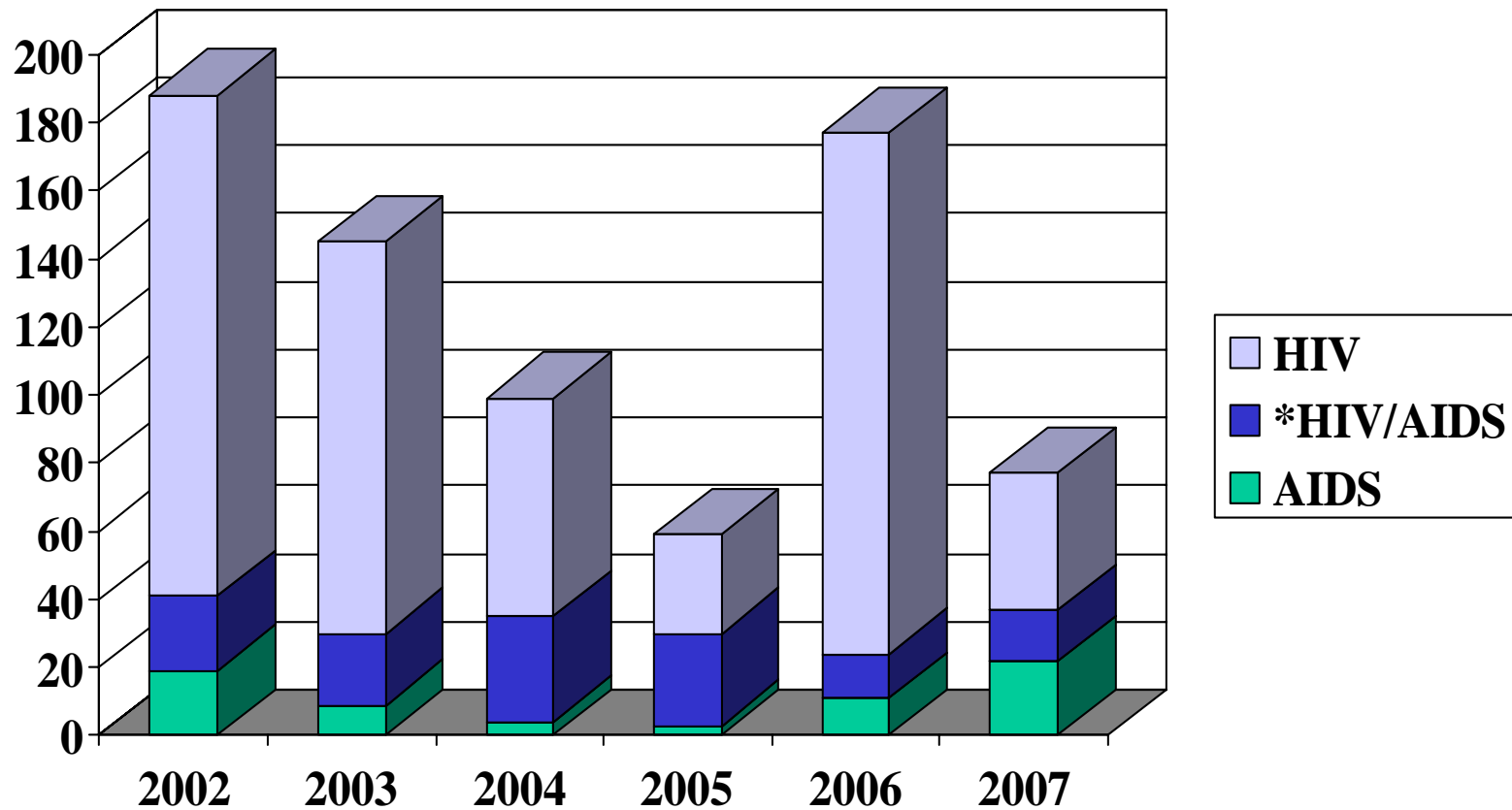
# VENTURA COUNTY PUBLIC HEALTH HIV/AIDS STATISTICS



**\*THE DRAMATIC DECLINE IN THE NUMBER OF HIV CASES BEING REPORTED IS DUE TO THE COMPLETION OR NEAR COMPLETION OF ENTERING RETRO-ACTIVE CASES.**

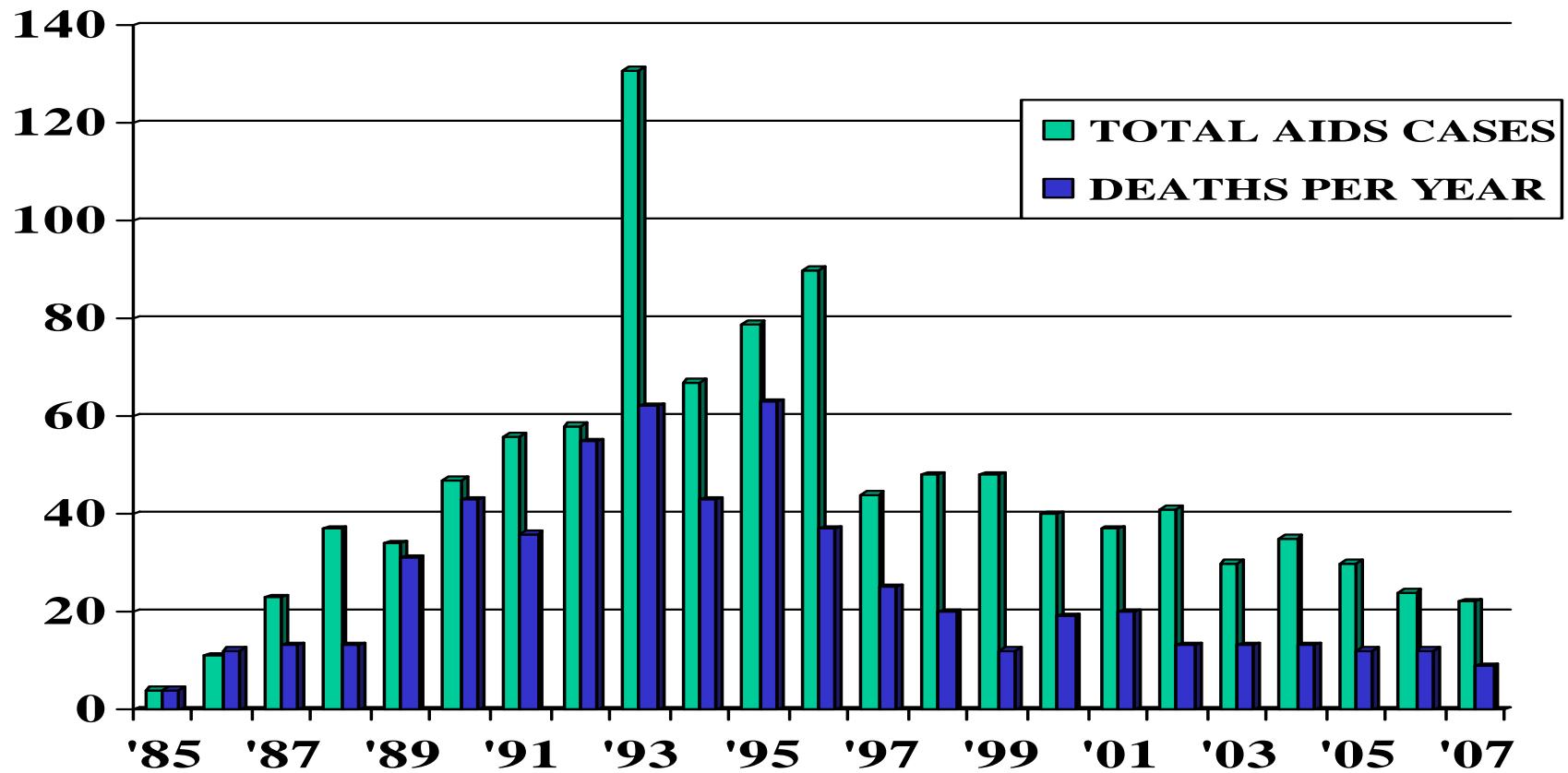
**\* THE INCREASE IN 2006 IS DUE TO THE NEW REPORTING LAWS ENACTED APRIL 17, 2006. MOST OF THESE ARE RE-ASCERTAINED CASES.**

# VENTURA COUNTY PUBLIC HEALTH HIV AND AIDS CASES ENTERED PER YEAR



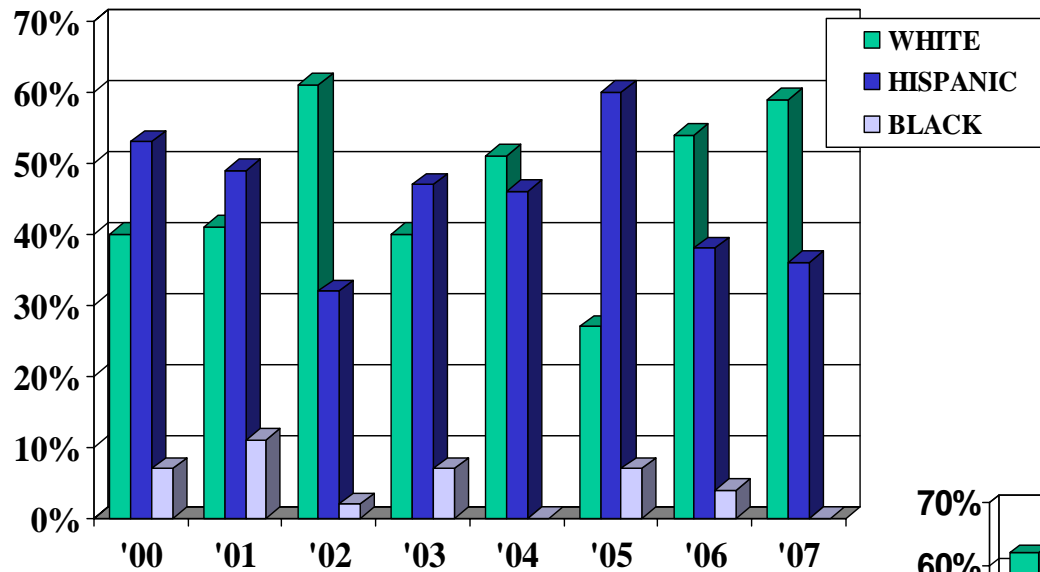
\* These are cases which presented as HIV positive and an AIDS diagnosis at the same time.  
(They are entered as AIDS cases.)

# VENTURA COUNTY PUBLIC HEALTH AIDS CASES AND DEATHS 1985 TO 2007

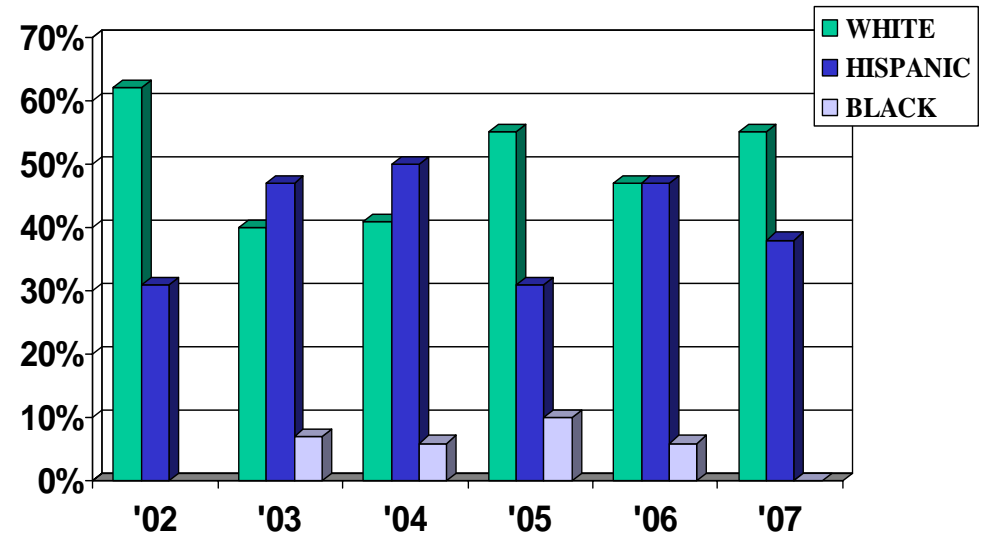


# VENTURA COUNTY PUBLIC HEALTH HIV/AIDS STATISTICS BY RACE

## AIDS



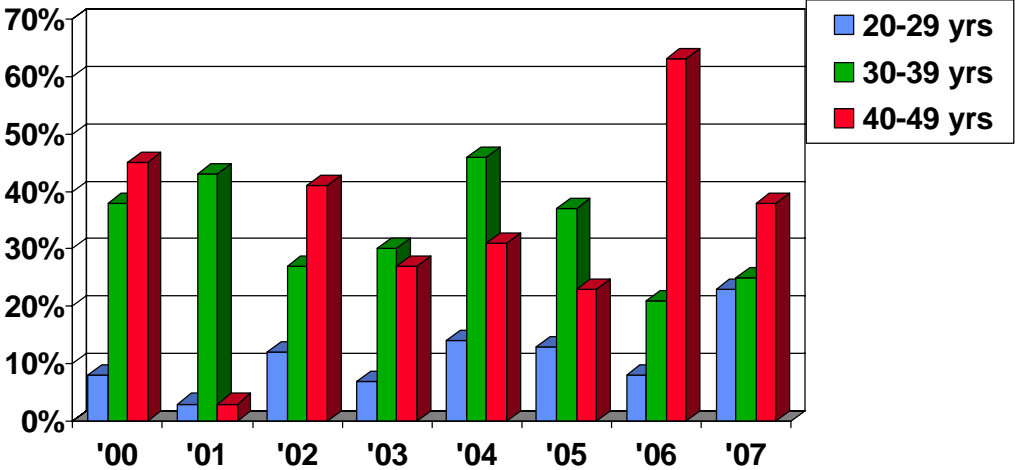
## HIV



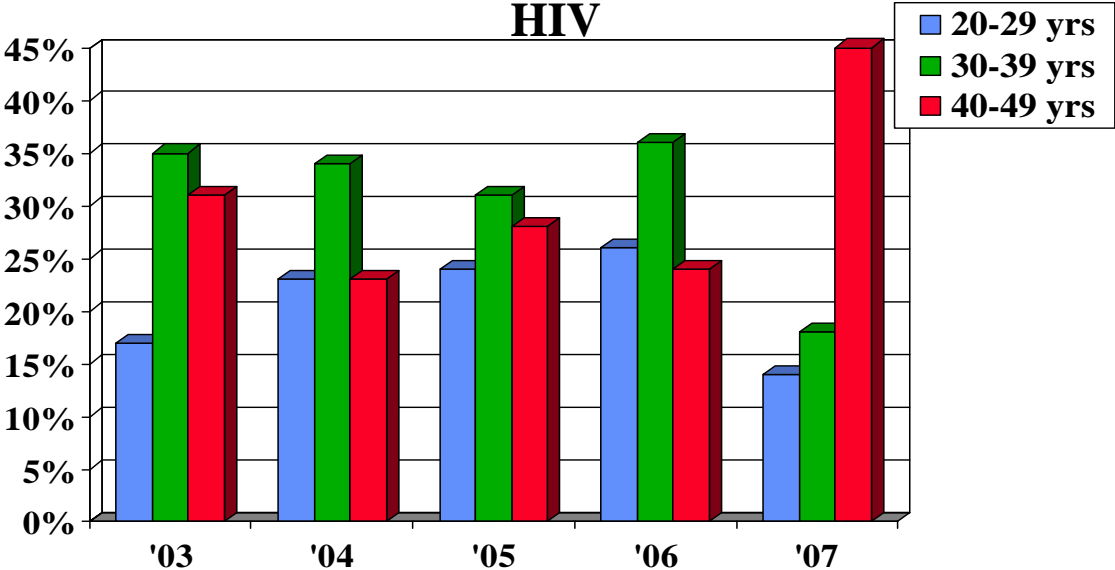


# VENTURA COUNTY PUBLIC HEALTH AGE AT DIAGNOSIS

## AIDS

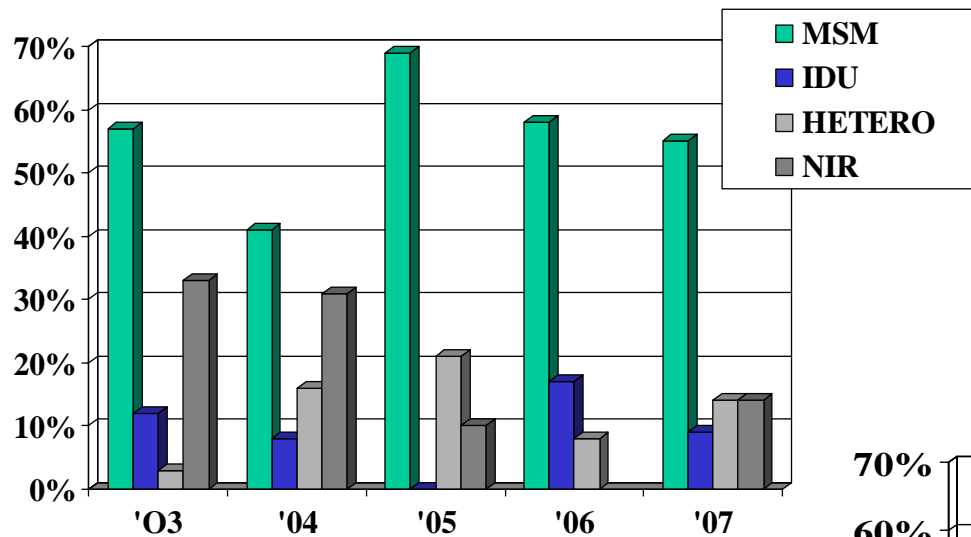


## HIV

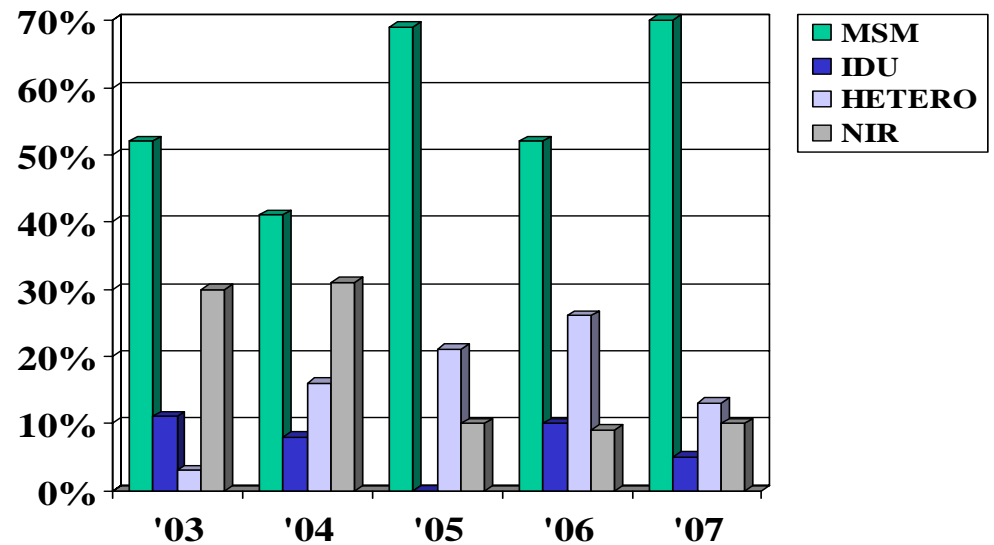


# VENTURA COUNTY PUBLIC HEALTH HIV/AIDS MODE OF TRANSMISSION

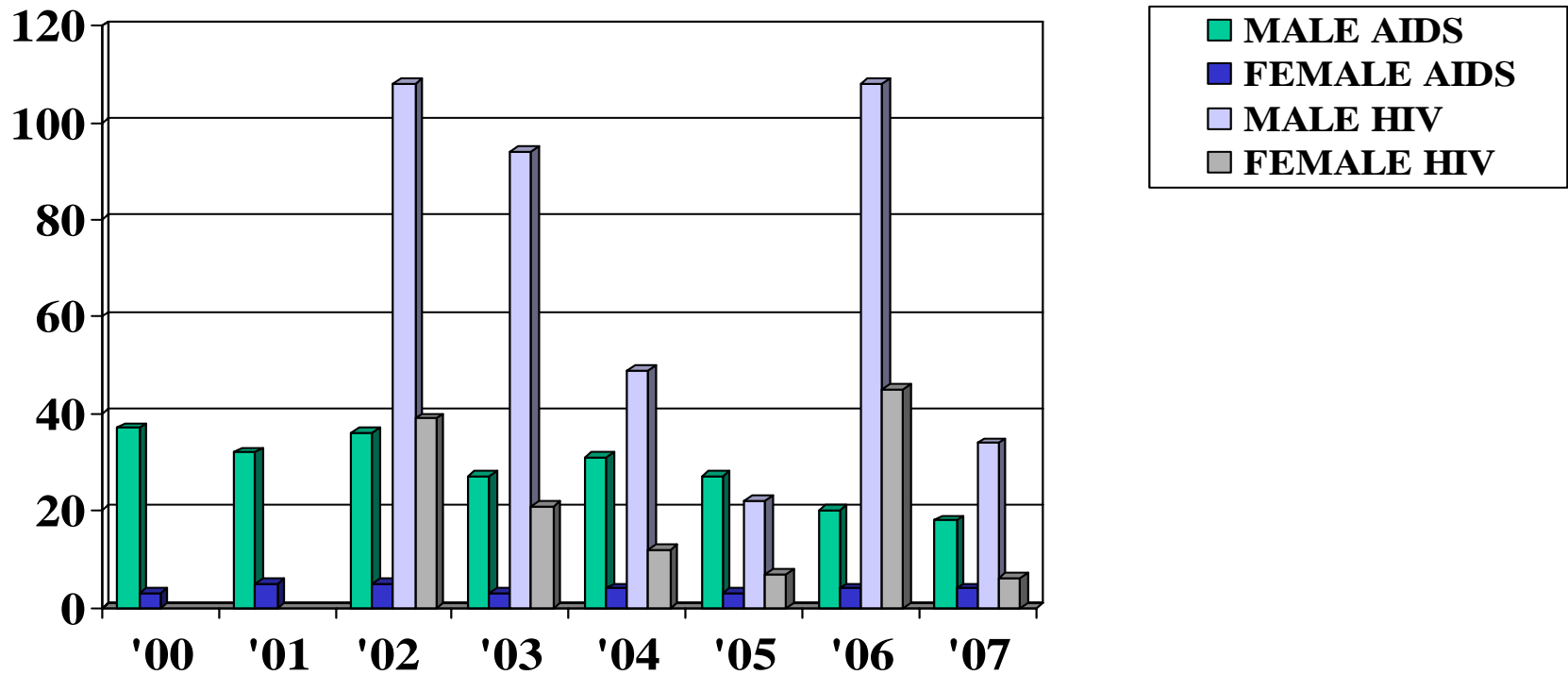
## AIDS



## HIV



# VENTURA COUNTY PUBLIC HEALTH HIV/AIDS SURVEILLANCE REPORTED CASES OF HIV/AIDS BY GENDER



\*

\*(6 mos. FOR  
HIV DATA)